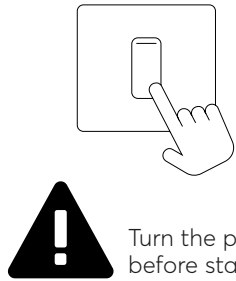
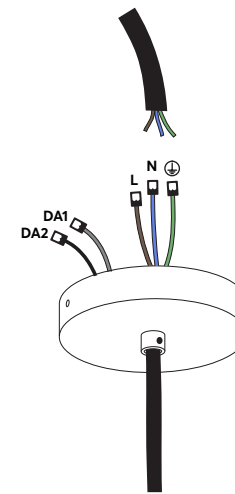
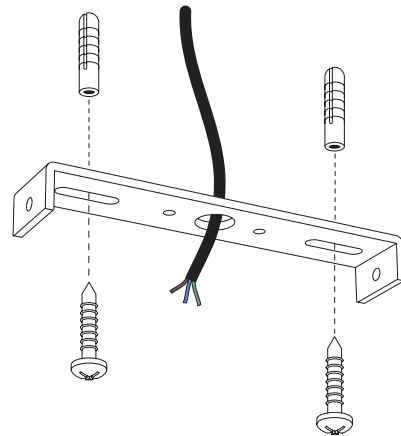


# You Will Need

(not included)

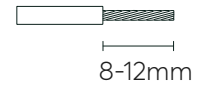


Turn the power off before starting!

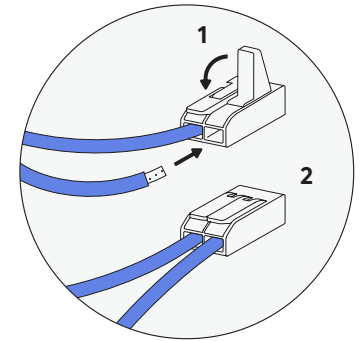


**DALI**

Strip the cable



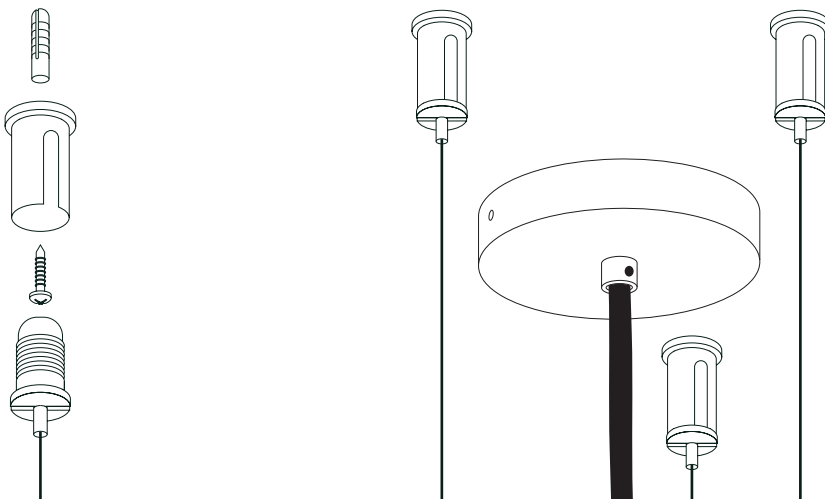
[www.wago.nl](http://www.wago.nl)  
(for more info)



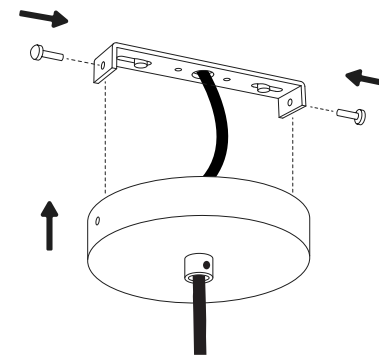
**1** Before starting, please read the guidance on the back of this leaflet.

**2** Drill holes and insert wall plugs. Line up the bracket, thread cable through and screw in place.

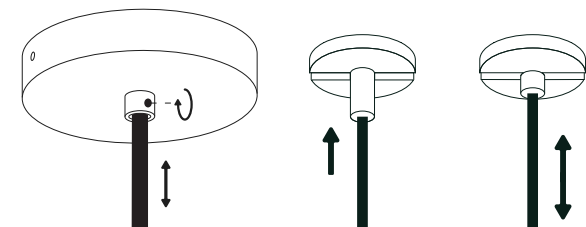
**4** The above diagram shows two dimming options (DALI and Trailing Edge). Strip 8-12mm of the cable, exposing the wires. Insert the electrical cable into the wago connector and flip closed.



**3** Screw the tensioners into the ceiling before adjusting the length, as shown in the above diagram.



**5** Connect the ceiling canopy to the bracket using 2 screws.



**6** Fine adjust the cable using the side screw. Adjust the tensioners as shown above. **Your light is now ready to use!**

- **Thank you for your purchase!**
- **Please read this manual carefully to ensure a safe and correct install of your light.**
- 
- 
- The manufacturer is not responsible for damage caused by incorrect installation.
- Always turn the power off before installation, carry out maintenance or repairs.
- If in doubt, contact a qualified electrician.
- Keep light away from liquid or flammable objects.
- When installing, make sure cables are not crushed, damaged or corroded.
- If a cable is damaged, it must be replaced by a trained professional.
- This product contains an integrated LED light source, which can only be replaced within its 2 year warranty.

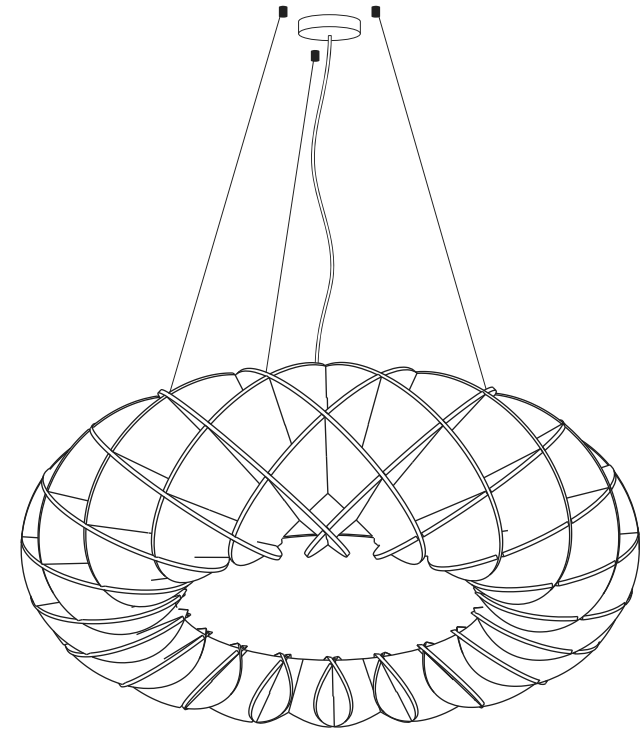


Assembled inside box  
 Material: PET Felt  
 Ceiling Rose: Black Metal  
 Weight: 19.6KG  
 IP20

CCT: 3000/4000  
 Dimming: DALI

# luménear

## Acoustic Lighting



# Halo 1400

Installation Guide